

## Light, tool for the edge

ICFO Director, Prof. Lluís Torner, interviewed by *If?*,  
*The innovation Newsletter*.

November 02, 2007

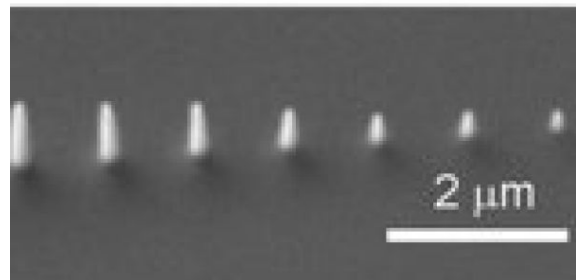
*If?*, a monthly magazine dedicated to the entrepreneurial innovations, focuses on the core themes of powerful ideas, powerful companies, powerful people and powerful tools and counts on the best national and international firms regarding innovation. *If?* is one of the several tools of Infonomia, the network of the reference for innovators, launched in 1995 with the aim of becoming a key space for the interchange of ideas and experiences by the company's most eager entrepreneurs.

*If?* highlights in this month's issue an interview with ICFO Director, Prof. Lluís Torner, who they describe as an "Explorer in charge of an expedition team". Prof. Torner explains his vision of science and ICFO's mission. During the course of the interview he also comments on some of the most fascinating applications of light when used as a tool for the edge describing for example the meaning of two ICFO mottos that can be found at its main

entrance:" Science of Light because we perform cutting edge research, we explore, we challenge ourselves to go where no man has gone before, as the first explorers of new continents, and Making Light Work because we are also aware of the fact that science should serve a useful purpose so we keep our eyes open to detect applications potentially beneficial to society."



Prof. Lluís Torner



High aspect ratio gold needles